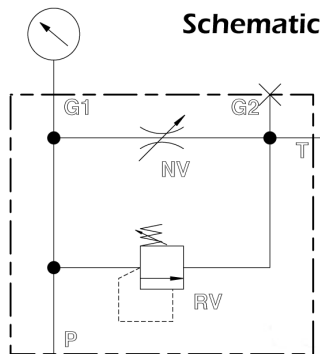


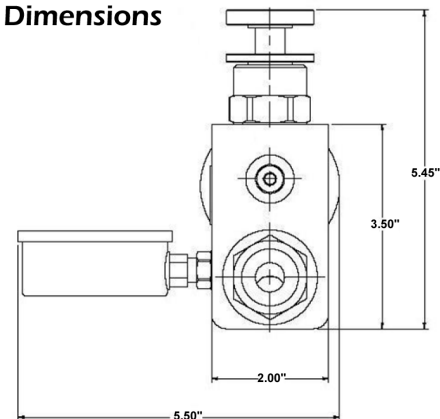
F E A T U R E S

The tester displays the flow rate of a hydraulic pump at various pressures. The difference of the flow at no pressure and at an elevated pressure establishes the volumetric efficiency of the hydraulic pump. The pump efficiency helps determine the condition of the pump.

- 3000 PSI Pressure Rating
- 0 - 30 Gallon Per Minute Flow Rating
- Needle Valve to Back-Pressure Component
- 0 - 5000 PSI Pressure Gauge
- Built in Relief Valve for Safety
- Cartridge Valve Construction for Easy Repair
- Portable
 - Conveniently test hydraulic systems in the shop or field
- Able to Determine Hydraulic System Flow Rates and Relief Valve Pressure Settings

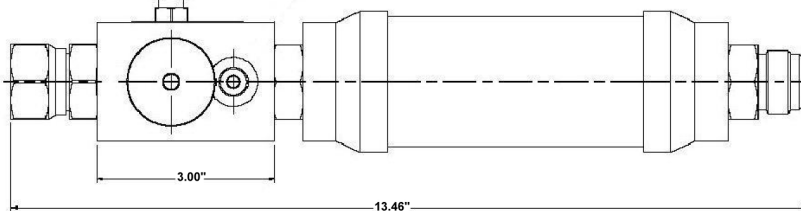


Dimensions



#12 JIC Female Swivel

Part # C10260



#12 JIC Male

8 8 8 - 9 9 F O R C E

501 East Cliff Road Burnsville, Minnesota 55337

www.forceamerica.com

Sales and Service Centers

Bismarck, ND 800-624-7568
 Charlotte, NC 800-788-8598
 Chicago, IL 800-433-5765
 Columbus, OH 888-449-0356

Dallas, TX 800-893-7225
 Denver, CO 888-833-7711
 Fort Dodge, IA 800-362-2994
 Kansas City, MO 800-383-4724

Milwaukee, WI 800-722-5844
 Minneapolis, MN 800-328-2732
 Philadelphia, PA 800-492-6621
 Salt Lake City, UT 877-230-0505